



Sussex Branch Newsletter



MAY 2012

April's speaker

Phil Waller stood in for Chris Watson at short notice. He gave a very interesting and informative talk about vintage tackle.

Rod Raffle

Bill Smith surpassed himself once again, coming up with some great prizes in his annual rod raffle, which he runs brilliantly every year. The winners of the top five prizes were:

- 1st Hardy Drifter 10ft. 5wt. 4 piece rod
Dave Waller
- 2nd Snowbee Waldron Vice
Keith Verrall
- 3rd Hardy Marksman 5-6wt. Reel
Alan Chamberlain
- 4th Reddington CPX 9ft. 7wt. 4pc rod
Fred Milward
- 5th ReddingtonWayfairer6 7wt. 4pc. 9ft rod
Peter Neave

An Auction with a Difference Results

As a result of some very generous bidding, the 15 donated auction with a difference lots at the end of our tying season evening raised over £800 for the club funds. A truly staggering amount, and testament to the goodwill and generosity that exists within our club. The auction could not have been better attended. I counted 54 members at the beginning of the evening, and it followed some excellent food and drink and Bill Smith's superb rod raffle.

The money will be used wisely, one immediate benefit to all of us is that we shall be able to maintain subscriptions to FDG Sussex Branch at £12 for the next 2 years, and possibly longer, and that is despite constantly increasing costs. As each year a number of our members do not renew, move away or sadly pass on. Attracting more new members than we lose is key to us having a vibrant and successful branch. This year Tony Woolnough has put together our biggest ever tying at shows programme to attract new members, and having a little extra money

in the kitty enables us to look at other innovative ways of increasing our membership.

I would like to thank for their donations of some very special and unique auction lots. 3 special friends of our club, Doug Chalmers, Brian Smart, Phil Waller, as well as club members Brian Raw, Alan Middleton, Brian Hendry, Paul Davis, Phillip Ellis, Tony Woolnough and Bill Black, for their extraordinary generosity, goodwill and support. My thanks also go to Roy Gurney, Andy Steer, Bill Smith and Wayne Duerden for their help and support running the auction.

Finally my thanks to all those who stayed to support the auction. Those members who could not attend, but who submitted postal bids to Roy Gurney, and those who placed bids and kept bidding so generously.

Tony Harrison

Reservoir Boat Fishing

For many seasons my preferred method of trout fishing has been from a boat on a reservoir. My reasons are many but the important ones are:

1. It is the closest I can get to wild trout fishing in my part of Sussex.
2. The fish have usually been in the water for many weeks and are long, lean and fighting fit.
3. By early May the trout are feeding naturally so can be tempted by imitation insects.
4. The water is clear so trout can see my flies from a distance. They will take dry flies from a long way down.
5. By fishing loch style (sideways from a drifting boat) I am always covering new water. I do not need to cast far. The wind is always behind me. There are no trees to attack my back cast.
6. I can sit down comfortably all day.
7. The fish quality is superb. At average weights of 1 ½ to 2lb you will be silly to use leaders of less than 7lb strength.
8. Where else can I fish all day with the opportunity of catching eight superb trout for a total cost of less than £40?

I have all the boat seats, drogue and large net necessary for two anglers. Please don't be put of by the sheer size of Bewl (or Arlington) for I can usually find the fish. So

please come and join me. It could totally change your outlook on fly fishing. Contact me on 01825 762975 or email: beehives@btinternet.com

Tight lines, John Plowman

Darrah Pairs competition at Bewl 22nd April 2012

As the weatherman predicted the weather was sunny and cool in the morning with a gentle westerly breeze. However, strong winds and heavy showers were expected after lunch. Ten anglers from the Sussex branch of FDG set out on to a much reduced but very clear Bewl water hoping to catch. As always on a large water there are two main skills involved. One is finding the fish, both in location and depth, and the other is catching them.

Following advice from the Bewl staff my boat partner Steve Mustchin and I started our first drift from the middle of the main bowl towards the dam keeping 50-100 yards from the right bank. I fished with a floating line and weighted flies and Steve with an intermediate. I caught one fish near the middle of the bowl and then as we neared the dam I had two more and Steve one. Other boats were also successful in the region.

By lunch our boat total was eleven. Lunch was its usual convivial event with beer provided in the ticket cost. It was difficult to be sure that anglers were telling the truth about their morning success (most boats seemed to have caught just five fish!!). The wind was now significantly stronger and the dam area was going to be rough. I soon caught my final fish but drifting sideways on we were shipping too much water so the boat was turned bows into the wind and the anchor thrown over. With the boat in this position in a strong wind it is only possible for one angler to fish safely. I had already warned Steve that pulling flies through a big wave was very exciting fishing and so it proved to be with Steve catching his final three trout in the next forty minutes.

It is an indicator of the quality of these Bewl rainbow and blue trout that Steve had his 6lb fluorocarbon leader broken twice by trout whose average weight is about two pounds. Also two of the fish we caught had flies in their mouths lost by previous anglers.

As you will see by the results, Steve and I won this year but only because Ian Dunk graciously returned a brownie of over 5lb. (Bewl management request, but do not insist, that all brown trout are returned because they are trying to increase the head of mostly wild browns). Thank you Ian.

My thanks to all who took part and I hope more of you will try reservoir boat fishing (just ask me if you would like to share a boat with me). Once you had your first reservoir success you will find it hard to go back to small water fishing.

Darrah Pairs competition results

Boat	Names	Number of fish	Best fish	Total weight	BOAT TOTAL
1	Steve Mustchin	8	2-13	16-0	33-5
	John Plowman	8	3-13	17-5	
2	Brian Raw	4	?	7-7	12-1
	Bill Black	2	?	4-10	
3	Ian Dunk	8	2-11	16-11	31-15
	Chris Croucher	8	2-7	15-4	
4	David Painter	2	2-3	4-5	15-9
	Ray Love	5	3-1	11-4	
5	Michael Brayne	1	2-6	2-6	16-9
	Colin Rann	7	2-8	14-3	

Aquatic Invasive Species (More illegal immigrants!)

Lucy Anderson (anderson.lucyg@gmail.com), an ecology PhD student at the University of Leeds, has written saying:

“As part of my research I'm investigating the impacts of aquatic invasive species in the UK. Animals such as North American signal crayfish, zebra mussels and killer shrimp, and plants such as floating pennywort are spreading through our waterways having been accidentally introduced from other countries. Species such as these can cause serious damage to river banks and water pipes and are responsible for dramatic declines of our native flora and fauna.

In the absence of any other form of control, the only way we can reduce the impact of these invasive species as well as diseases that they may introduce, such as crayfish plague and koi herpesvirus, is to ensure that we do all we can to prevent their further spread. Disease organisms and invasive species in their smaller juvenile stages may be accidentally spread between waterbodies on boats, vehicles, clothing and fishing equipment. We are seeking your help to try and get a better understanding of current fishing practices so we can identify possible ways to prevent their spread.

We are therefore distributing questionnaires to anglers as well as canoeists and boaters to find out more about the rivers that they are visiting and the kit that they are using at each site. This will enable us to see whether there are any areas where the risks from invasive species are likely to be greatest so that awareness campaigns and preventive measures can be targeted to those areas to prevent future outbreaks.

The questionnaire is here: <http://www.survey.leeds.ac.uk/anglersurvey> . I'd be very grateful if you could email the link to the questionnaire around your trust members. The questionnaire takes 5 - 10 minutes to complete and all answers are completely anonymous. Everyone who completes the survey is given the opportunity to enter a prize draw to win a £50 voucher for AnglingDirect online tackle shop.

Please let me know if you'd be willing to help with this. If you require any further information from me, please do not hesitate to ask."

This seems to be a very worthwhile project and deserves our support.

Chairman's Chat

River Management

In order to keep a healthy run of migratory fish (in this case salmon and sea trout) in a rivers system, some form management must be applied to exploitation both by anglers and commercial fishermen.

This can be achieved by ensuring that no fish are taken before the holding capacity of the river has been reached. That is, have sufficient adults entered the river to take advantage of the spawning gravel area and juvenile nursery areas available? As they say, this is easier said than done. But it can be done.

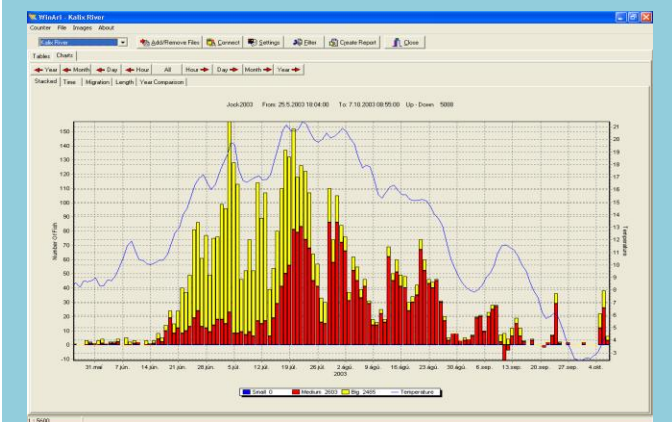
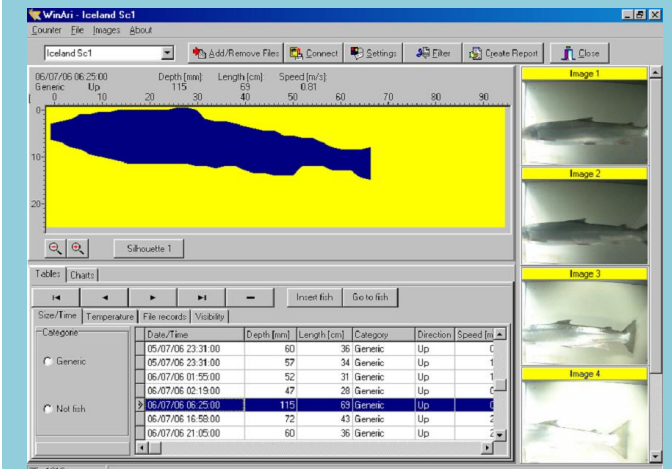
The holding capacity of spawning gravel is assessed by making a walking survey of the spawning reaches and identifying the various classes of gravel mix and measuring the area of bed in question. The gravel mix can be assessed by taking representative samples and carrying out a sieve analysis, i.e. simply passing the gravel through a number of different size sieves and measuring the percentage of each size. Totalling the number of reds which can be laid in each gravel classification gives the total number of adults which the rivers system has sufficient spawning gravel for.

The nursery area for juveniles can be found in a similar way, i.e. measure the area of suitable reaches and multiplying this area by known values of juveniles per square km. which can be supported.

Then comes the comparison; which of these values is the controlling (lowest) number?

The next management stage is counting the number of fish which have entered the river and when the holding levels for spawning have been exceeded exploitation can commence.

To count the number of fish which are ascending the river obviously a Fish Counter is required at a position at which all fish must go through, this is almost always a fish pass. The most versatile and accurate form of counter is the Riverwatcher. As those of you who managed to keep awake in my talk will remember, this counter uses infra red beams to detect and measure ascending fish. This counter can produce graphs of number of fish, photographs of fish, size weight and species, water temperature and swimming speed. In addition all this data can be remotely interrogated.



Alternatively sports fishing can only be carried out on a catch and release basis until the holding capacity of the river is reached. In practice many rivers do not have a run of fish above their holding capacity and all fish are released.

Tony W.

Bass Fishing 2012

Brian Hendry has now been able to formulate a programme of suitable dates for fly-fishing for bass at Shoreham. Wading is from the beach at Shoreham power station – **chest waders are essential**.

Meet at the times shown at the car park at Carat's Café on the Eastern end of the South (sea) side of the Harbour.

June 4 th	Monday	16.00
June 5 th	Tuesday	17.00
June 6 th	Wednesday	18.00
July 4 th	Wednesday	17.00
July 5 th	Thursday	18.00
July 21 st	Saturday	17.30
July 22 nd	Sunday	18.30
August 2 nd	Thursday	16.30
August 3 rd	Friday	17.30
August 19 th	Sunday	17.30
August 20 th	Monday	18.00
August 31 st	Friday	16.30
September 3 rd	Monday	18.00
September 17 th	Monday	17.00
September 28 th	Friday	15.30
September 29 th	Saturday	16.30
September 30 th	Sunday	17.30

Back-up plan (if wind and weather are unsuitable for wading) is to relocate to the river at Norfolk Bridge, where tides are approximately one hour later. Free parking at Adur recreation ground – from Brighton take road over the bridge to the first roundabout, go right round and come back towards Brighton, car park on left just before the bridge.

If in doubt, or for other queries, Brian's phone is 01273 463126 (mobile 07884 305085).

A BAD DAY FISHING IS BETTER THAN A GOOD DAY AT WORK





FLYTYINGSHOP.CO.UK
for all your fly tying needs

10% off all web orders

Enter the code
FDG10%2012
at check out.

Don't have a computer?
Can't find the product you want online?
Then call us on 01273 252504
to receive the same offer.

OVER
5000
ITEMS
IN STOCK



www.flytyingshop.co.uk

Published by the Sussex Branch of the Flydressers' Guild

Chairman: Tony Woolnough 01273 483833
Secretary: Paul Bond 01273 420410
Treasurer: Roy Gurney 01273 506184

Editor: Andy Steer, 37 Blatchington Road, Seaford, East
Sussex BN25 2AF
Phone: 01323 899257
E-mail: a.v.steer@talk21.com

Visit our web site

Sussexflydressers.org.uk